

FIRE SAFETY



This building is designed to contain a fire within the flat or area where it starts.

FIRE DOORS SAVE LIVES



DO NOT

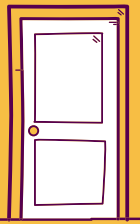
leave a fire door wedged or propped open



NEVER

disconnect an automatic closer

IF A FIRE BREAKS OUT IN YOUR FLAT



1

Leave the room where the fire is and close the door.



2

Alert anyone in your flat and leave. When leaving the flat, close the door behind you. **Do not** stay to put the fire out.

3

Use the staircase to exit the building. **Do not** use the lift.



4

Dial 999 and wait for the fire service to arrive. **Do not** re-enter the building.



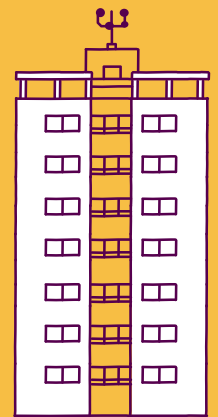
IF YOU SEE OR HEAR OF A FIRE IN ANOTHER FLAT OR PART OF THE BUILDING

1

It will normally be safest for you to remain in your own flat.

2

However, you are of course, free to leave the building if you would prefer to do so.



3

If you are instructed to leave by a member of the emergency services, you should do so immediately.

4

In either case, use the staircase to exit the building. **Do not** use the lift.



A high degree of fire separation between flats and the rest of the building is achieved by making each flat a fire-resisting enclosure. This is known as compartmentation.

If you notice any fire doors within the building that are damaged or wedged open, please call us on freephone 0800 027 7769